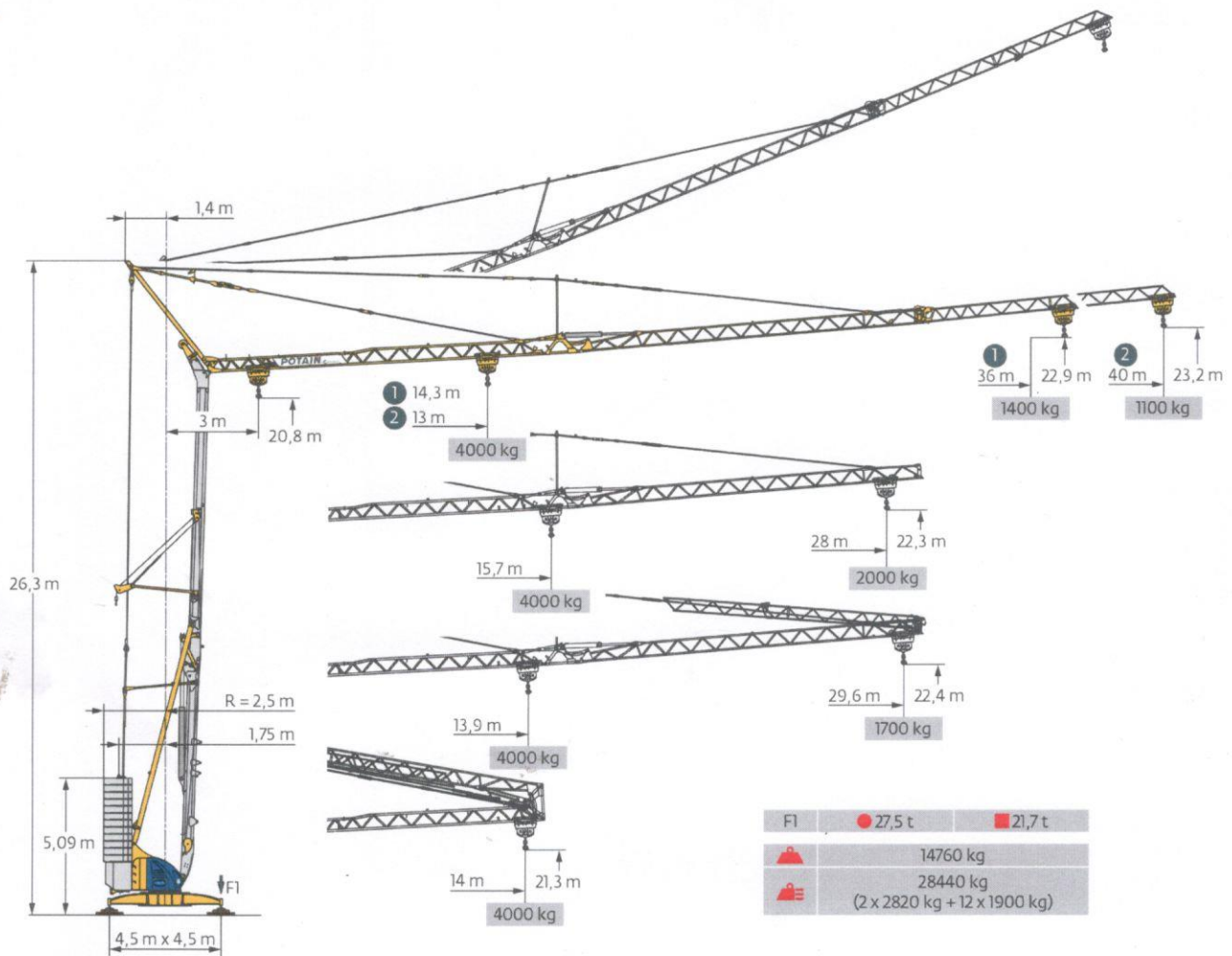
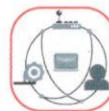


Igo 50



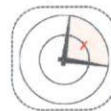
SmartCom



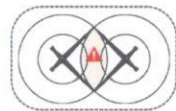
CraneSTAR
Diag



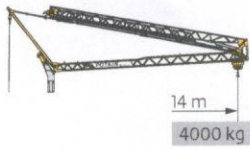
Top Zone



Anti-collision
system



Courbes de charges / Lastkurven / Load curves / Curvas de cargas / Curve di carico
 Curvas de carga / Кривые нагрузок



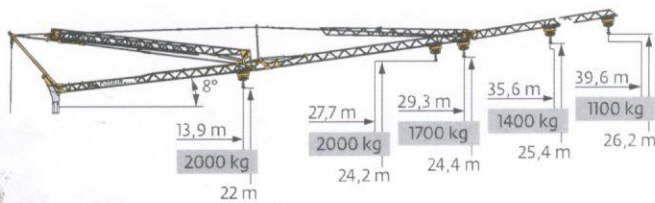
40 m	3	▶	14	m
				4000 kg
				2000 kg
				2000 kg
36 m	3	▶	14	m
				4000 kg
				2000 kg
				2000 kg
28 m	3	▶	14	m
				4000 kg
				2000 kg
				2000 kg



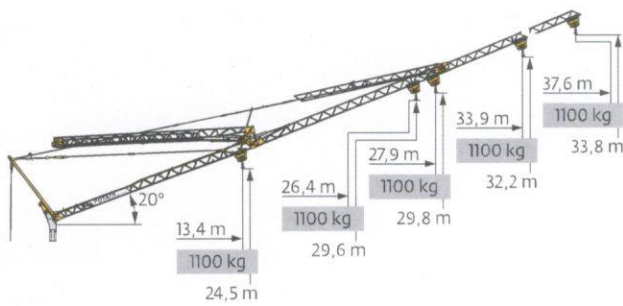
3	▶	13	14	15	16	17	18	19	20	23	24,2	25	27	30	32	35	37	40	m		
																				kg	
																					kg
																					kg
3	▶	14,3	15	16	17	18	19	20	22	24	25,3	26,6	27	30	32	35	36	m			
																					kg
																					kg
																					kg
3	▶	15,7	17	18	19	20	22	23	25	26	27	28	m								
														kg							
														kg							
														kg							



3	▶	13,9	15	16	17	18	19	20	22	24,7	25	25,8	27	29,6	m
															kg
															kg
															kg
															kg










40 m	3	▶	22,7	23,9	25	27	30	32	35	37	39,6	m
												kg
												kg
												kg
36 m	3	▶	25,1	26,3	27	30	32	35	35,6	m		
												kg
												kg
												kg
28 m	3	▶	27,7	m								
					kg							
					kg							
40 m	3	▶	24,4	25,5	27	29,3	m					
								kg				
								kg				
40 m	3	▶	13,9	m								
					kg							
					kg							



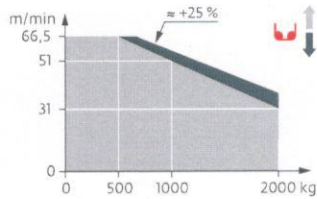
40 m	3	▶	37,6	m	
					1000 kg
					1100 kg
36 m	3	▶	33,9	m	
					1000 kg
					1100 kg
28 m	3	▶	26,4	m	
					1000 kg
					1100 kg
40 m	3	▶	27,9	m	
					1000 kg
					1100 kg
40 m	3	▶	13,4	m	
					1000 kg
					1100 kg

Mécanismes / Triebwerke / Mechanisms / Mecanismos / Meccanismi
 Mecanismos / Механизмы

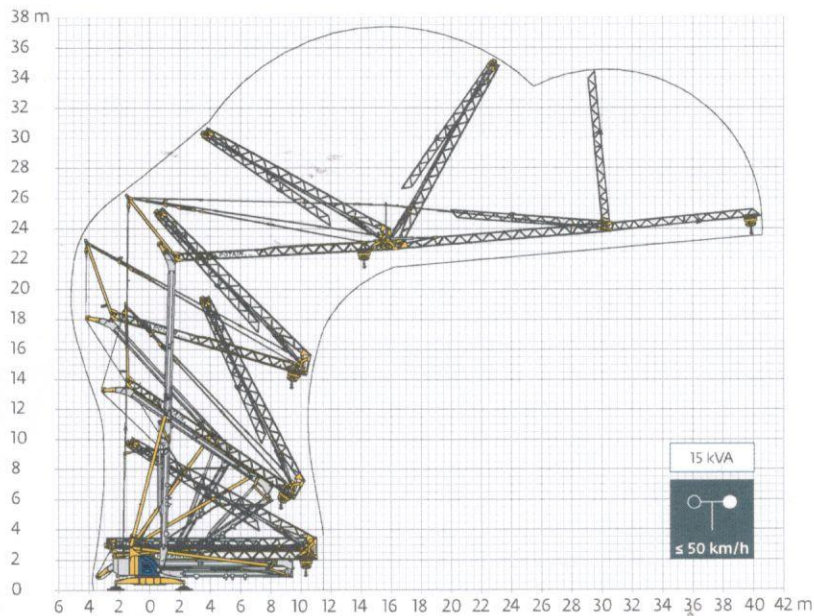
400 V - 50 Hz 480 V - 60 Hz												ch - PS hp	kW	
	15 LVF 10 Optima	m/min	3,6	18	31	51	66,5	1,8	9	15,5	25,5	33	15	11
		kg	2000	2000	2000	1000	500	4000	4000	4000	2000	1000		
	3 DVF 5	m/min	15 - 30 - 45 (0 → 1000 kg) 15 - 30 - 41 (1000 → 4000 kg)									3	2,2	
	RVF 51 Optima+	tr/min U/min rpm	0 → 0,8									5,5	4	

 IEC 60204-32	 kVA
400 V (+10% -10%) 50 Hz / 480 V (+6% -10%) 60 Hz	17 kVA

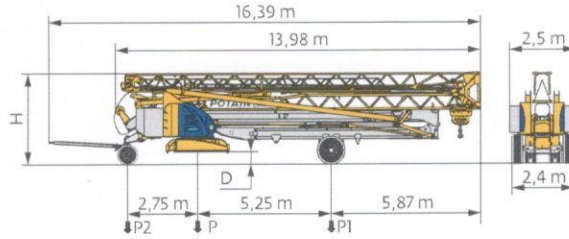
15 LVF 10 Optima



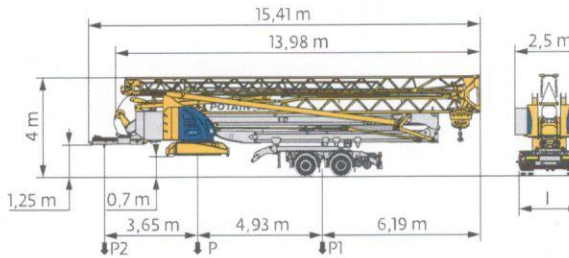
Montage / Montage / Erection / Montaje / Montaggio
 Montagem / Монтаж



Transport / Transport / Transport / Transporte / Trasporto
Transporte / Транспортировка



	km/h	D (m)	H (m)	P (kg)	P1 (kg)	P2 (kg)
DJ100/S120	10	0,35/0,2	3,57/3,42	21655	11725	9930
DJ105/S125	25	0,35/0,2	3,57/3,42	21945	11945	10000



	km/h	l (m)	P (kg)	P1 (kg)	P2 (kg)
SL121/S215M	25	2,4	23740	15490	8250
SL122/J215M (EBS) RCE e2°2007/46°0493°01 WVTA e2°2007/46°0493°01	80	2,45	23650	15400	8250

FR

- R** Rayon de giration
- i** Nous consulter
- Réactions en service
- Réactions hors service
- ▲ Poids à vide, sans lest, sans trains de transport, avec flèche maxi. et hauteur standard.
- Poids total du lest
- Equipements standards
- Equipements optionnels
- Levage
- Distribution
- Orientation
- ⚡ Puissance requise

DE

- Schwenk radius
- Auf Anfrage
- Reaktionskräfte in Betrieb
- Reaktionskräfte außer Betrieb
- Gewicht ohne Last, ohne Ballast, ohne Transportachsen mit max. Auslager und Standardhöhe
- Ballast-Gesamtgewicht
- Standardausrüstungen
- Sonderausrüstungen
- Heben
- Katzfahren
- Schwenken
- Erforderliche Leistung

EN

- Rear slewing radius
- Consult us
- Reactions in service
- Reactions out of service
- Weight without load, without ballast, without transport axes, with max. jib and standard height
- Total ballast weight
- Standard equipment
- Options
- Hoisting
- Trolleying
- Slewing
- Required power

ES

- Radio de giro
- Consultarnos
- Reacciones en servicio
- Reacciones fuera de servicio
- Peso en vacío, sin lastre, sin trenes de transporte con flecha y altura estándar
- Peso total del lastre
- Equipamiento de serie
- Equipamiento opcional
- Elevación
- Distribución
- Orientación
- Potencia Necesaria

IT

- Raggio di rotazione
- Consultateci
- Reazioni in servizio
- Reazioni fuori servizio
- Peso a vuoto, senza zavorra, senza assali di trasporto, con braccio max e altezza standard.
- Peso totale della zavorra
- Equipaggiamento standard
- Equipaggiamento in opzione
- Sollevamento
- Distribuzione
- Rotazione
- Potenza richiesta

PT

- Raio de rotação
- Consultar-nos
- Reacções em serviço
- Reacções fora de serviço
- Peso em vazio, sem lastro, sem eixos de transporte com lança máxima e altura standard.
- Peso total do lastro
- Equipamento de série
- Equipamento opcional
- Elevação
- Distribuição
- Rotação
- Potência Necessária

RU

- Задний габарит
- Проконсультируйтесь у нас
- Реакция при работе
- Реакция в покое
- Вес без груза, без балласта, без осей для транспортировки, с максимальной вылетом стрелы и стандартной высотой
- Общий вес балласта
- Стандартное оборудование
- Дополнительное оборудование (опция)
- Подъем
- Перемещение по стреле
- Поворот
- Потребляемая мощность



Hauteurs sous crochet données moufle plaquée
Document commercial non contractuel
Pour toute information technique se référer à la notice correspondante

Hakenhöhen werden mit plattiertem Haken angegeben
Unverbindliches Vertriebsdokument

Hook heights given with plated pulley block
This commercial document is not legally binding
For any technical information, please refer to the corresponding instructions

Altura bajo gancho con pasteca bloqueada
Documento comercial no contractual
Para cualquier información técnica, ver la noticia correspondiente

Altezza sotto gancio con bozzello in contatto con carrello
Documento commerciale non vincolante
Per tutte le informazioni tecniche fare riferimento al catalogo istruzioni

Altura ao gancho com o cadernal em contacto com o carrinho
Documento comercial não contratual
Para qualquer informação técnica complementar consultar as respectivas instruções

высота под крюком дана при условии, что крюковая подвеска соприкасается с кареткой
Этот коммерческий документ не является юридически обязательным
Для получения технической информации, см. соответствующие инструкции

